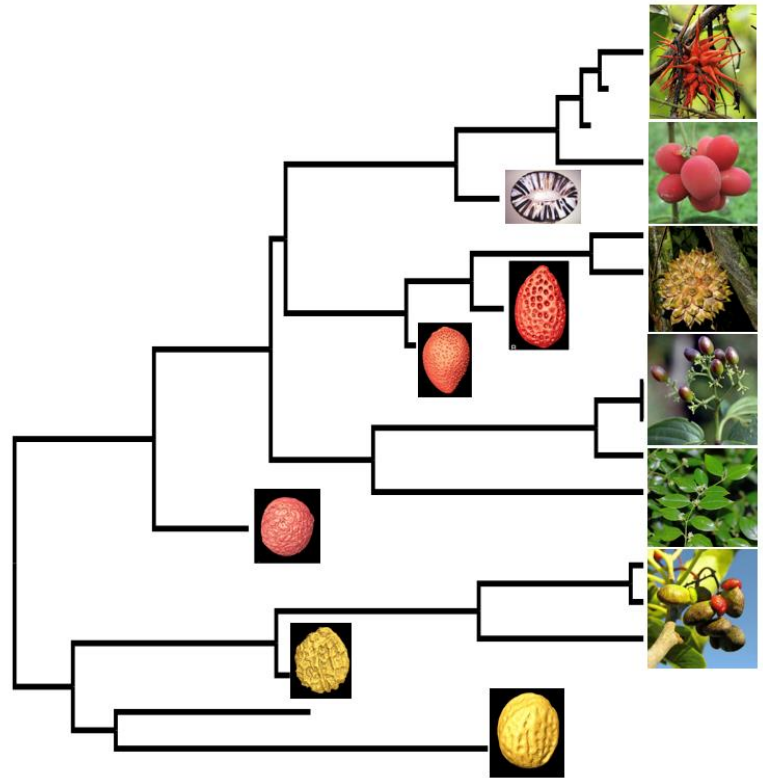


EKU Biology Seminars

Spring 2017



Evolutionary history of a pantropical family (Icacinaceae) inferred from genomic & fossil data



Presented by:

Dr. Gregory Stull
University of Michigan

Find research info at:
<http://bit.ly/2knRQTF>

Hosted by Ruhfel Lab

When:

7 April 2017
11:00 for refreshments
11:15 seminar starts

Where:

Moore #123